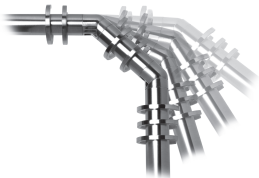
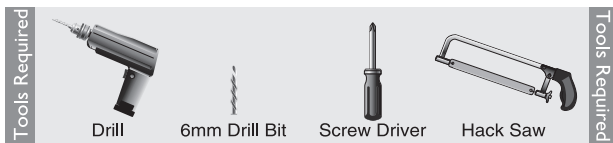


# 28mm Bay Pole Return Kit Fitting Instructions

**- Please read carefully before commencing**

**We strongly recommend that 2 people undertake the fixing of this pole**

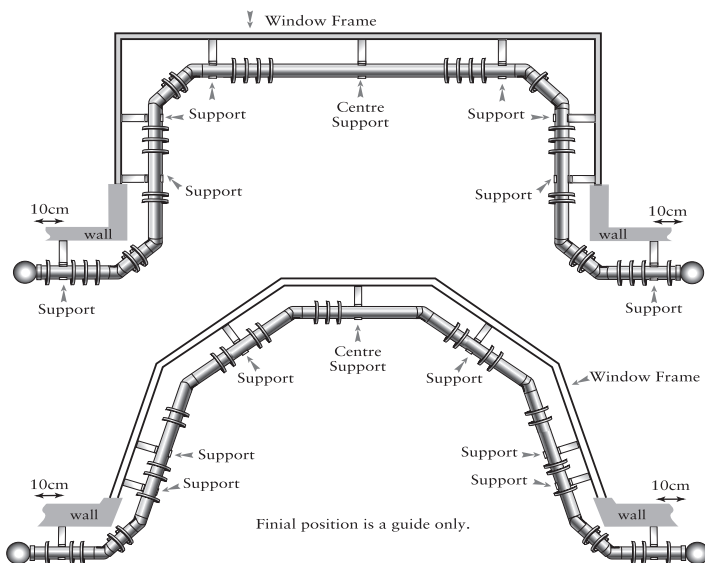
Please read all instructions carefully before installation.



The unique corner joints in this Premier Bay Return Kit will fit any bay return.

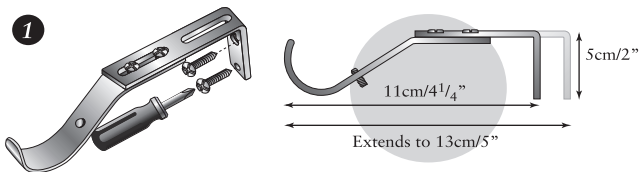
The illustrations below are examples only.

## How The Completed Pole Should Look



Final position is a guide only.

## Support Positions



Fix the support brackets to the wall in the positions marked above.

## Adjusting Pole Length

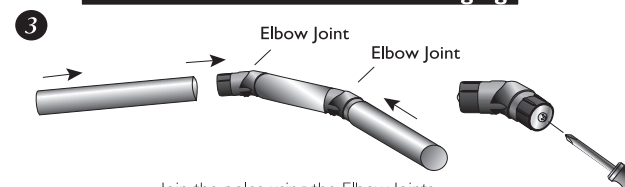


If required, cut the poles to size.

Please Note: When cutting the longer poles, cut an equal amount off both poles. This will ensure the joint remains in the centre.

**When cutting the pole to size please make sure you allow for the length of the corner bends.**

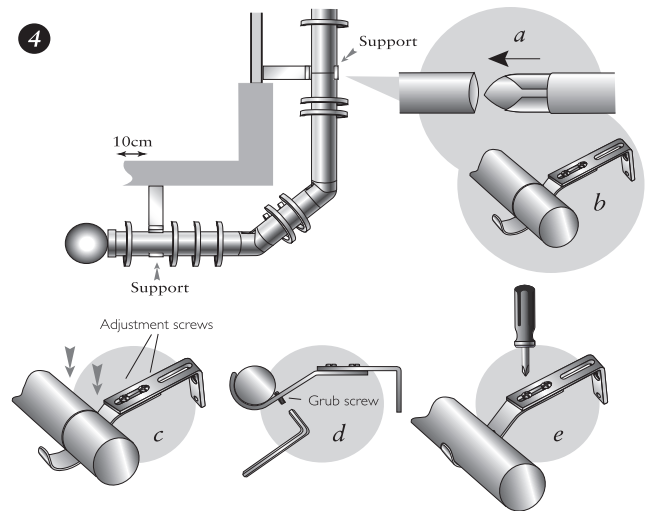
## Assemble Return Kit Before Hanging



Join the poles using the Elbow Joints

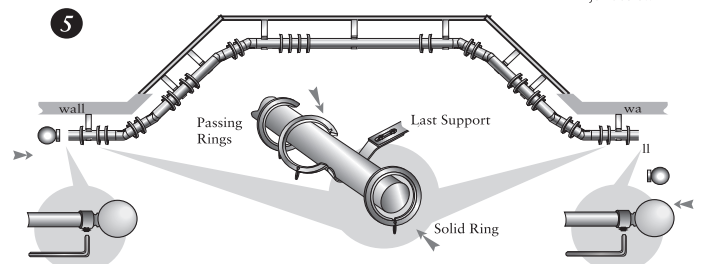
It is essential to tighten the screws at both ends of the Elbow Joint.

## Hanging the Pole



Present the assembled Return Kit to the Bay Pole.

- Join the Return Kit to the Bay Pole using the joining splice provided.
- Support B should be positioned to cover the join as illustrated
- To help align the pole there are some adjustment screws on top of the support
- Tighten the grub screw underneath the pole with the allen key supplied.
- Finally, tighten the adjustment screws on top of the supports.
- Please ensure that the elbow joint is fixed with the screw on the joint facing downwards

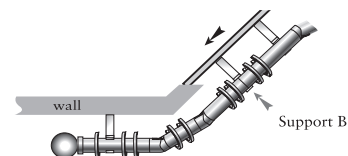


Place the passing rings onto the pole by sliding or clipping them onto the pole, except after the last support on either end where there is a solid ring supplied for each side - slide these onto the pole.

Place the finial onto the pole- either push on for push-fit, or secure using the allen key if it has a grub screw.

- To enhance the fit, we advise that you tighten the joint screws on the elbow of the corner joint refer to point 4f. We recommend that the rings are positioned at least 10cm apart to enhance the flow of the curtain .

## Fixing to an already assembled bay pole



If adding a Return Kit to an already assembled Bay Pole, we recommend moving support B to cover the joining splice and provide extra stability.

Remember to remove the solid rings and position as in point 5 above.

*Component parts may vary in style.*